

Francisco Braga (1868-1945)

Fantasia pastoril (1908)
para 4 trompas

Editoração: Rodrigo de Jesus

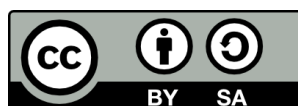
Fontes: Biblioteca Alberto Nepomuceno (Universidade Federal do Rio de Janeiro)

quarteto de trompas
(*horn quartet*)

Partes:

Trompa 1 em Fá
Trompa 2 em Fá
Trompa 3 em Fá
Trompa 4 em Fá

16 p.



MUSICA BRASILIS

Fantasia pastoril

para 4 trompas

Trompa 1 em Fá

Fanfarras de caça

Francisco Braga
1908

Allegretto **allarg.**

5 **tempo A**

11 **allarg.** **tempo**

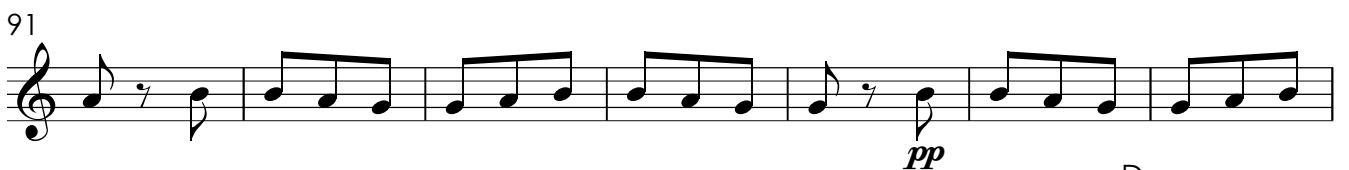
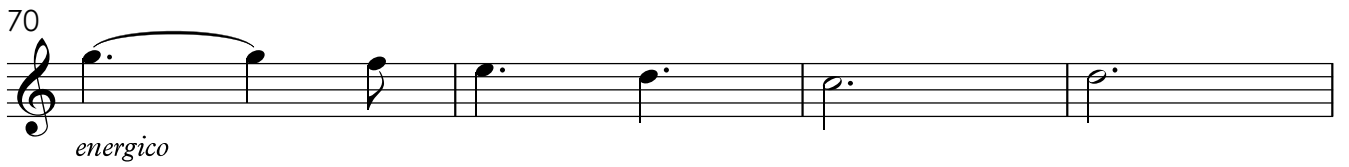
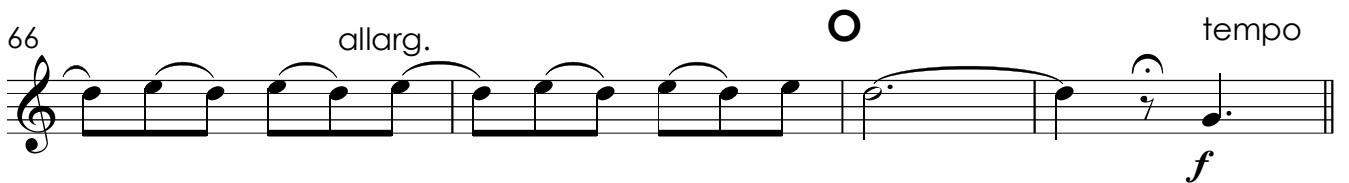
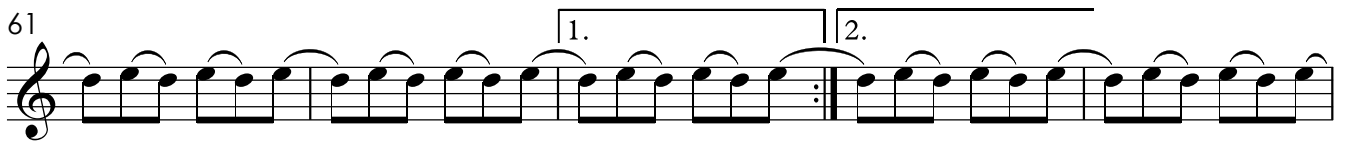
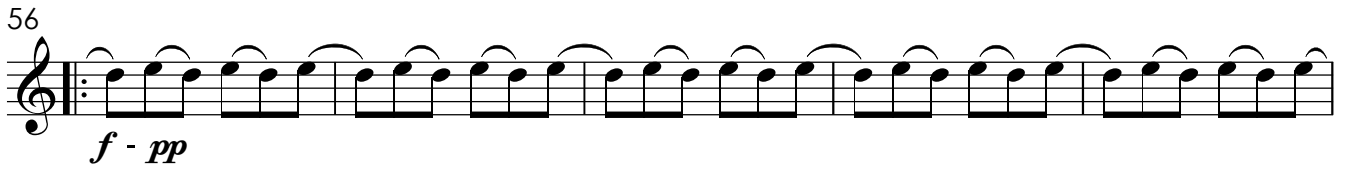
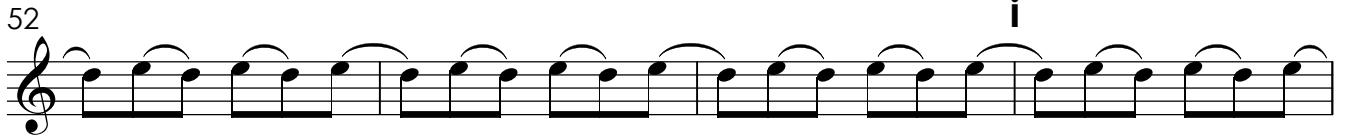
18

25

32 **allarg.** **E** **tempo** **5**

39 **3** **f** **dim.**

47 **p** **crescendo**



Canone

Andante

pp

3

3

8

15

3

3

21

pp

25

Trompas

Moderato

pp

7

pp

13

18

p

A

22

pp

28

32

36

40

44

49

54

59

65

70

Fantasia pastoril

para 4 trompas

Trompa 2 em Fá

Fanfarras de caça

Francisco Braga
1908

Allegretto **allarg.**

5 **tempo**

11 **allarg.** **A tempo**

18 **p**

24 **f**

31 **allarg.** **E tempo**

38 **f**

44

dim. *p*

50

crescendo *i*

56

f - pp

62

1. 2. *pp*

66

allarg. *tempo*

70

7

85

rit. *Fim* *U a tempo* *f*

91

pp

98

rit. *Da capo ao fim*

Canone

Andante

4

pp

3

10

17

23

3

pp

Trompas

Moderato

7

pp

14

A

20

p

pp

25

31 **E**
pp *p*

35 *p*

40 *accel.*
cresc.

44 *f* *dim.* *p*

50 *pp* *dim.*

56 *p*

60 *f*

66 *f* *dim.*

70 *p* *poco rall.* *pp*

Fantasia pastoril

para 4 trompas

Trompa 3 em Fá

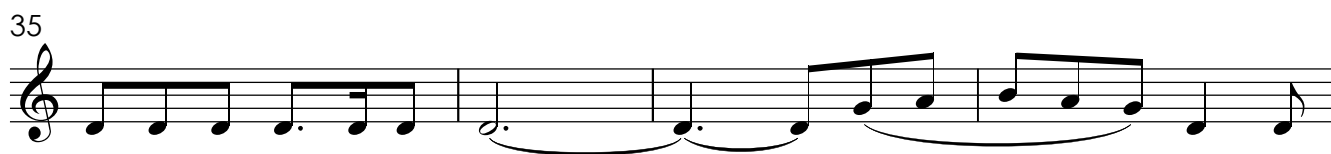
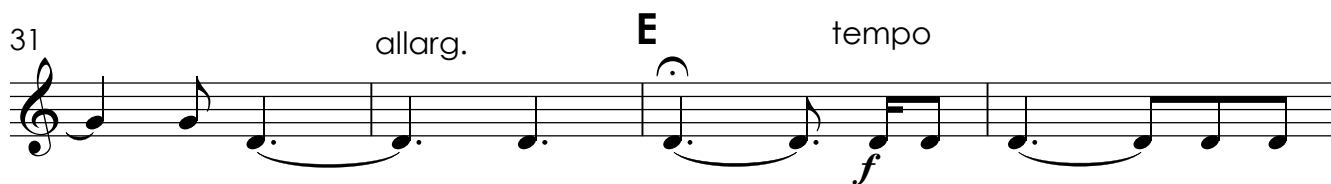
Fanfarra de caça

Francisco Braga

1908

Allegretto

allarg.



45

dim. *p* *crescendo*

51

i

56

f - pp

61

pp

66

allarg. *tempo* *f*

74

83

rit. *Fim* *U a tempo* *f*

90

pp

98

rit. *Da capo ao fim*

Canone

Andante

8

p

3

3

14

21

pp

25

3

3

Trompas

Moderato

p

7

pp

13

18

p

22

pp

A

27

pp

Detailed description: Musical staff 27-31. Treble clef, key signature of one sharp (F#). The staff contains a melodic line with eighth and sixteenth notes. Dynamic markings include accents (>) and a piano-piano (pp) marking at the end.

32

E

p

Detailed description: Musical staff 32-35. Treble clef. A fermata is placed over the first measure. The staff contains a melodic line with eighth notes. Dynamic markings include piano (p) and accents (>).

36

Detailed description: Musical staff 36-39. Treble clef. The staff contains a melodic line with eighth notes and rests. Dynamic markings include accents (>).

40

accel.

3

cresc.

Detailed description: Musical staff 40-43. Treble clef. The staff contains a melodic line with eighth notes, including a triplet of eighth notes. Dynamic markings include accents (>) and a crescendo (cresc.) marking.

44

f dim. p

Detailed description: Musical staff 44-49. Treble clef. The staff contains a melodic line with eighth notes. Dynamic markings include forte (f), diminuendo (dim.), and piano (p). Accents (>) are present at the end.

50

pp

3

Detailed description: Musical staff 50-54. Treble clef. The staff contains a melodic line with eighth notes, including a triplet of eighth notes. Dynamic markings include piano-piano (pp) and accents (>).

55

dim. p

Detailed description: Musical staff 55-59. Treble clef. The staff contains a melodic line with eighth notes. Dynamic markings include diminuendo (dim.) and piano (p).

60

f

Detailed description: Musical staff 60-65. Treble clef. The staff contains a melodic line with eighth notes. A fermata is placed over the first measure. Dynamic markings include forte (f) and accents (>).

66

f dim. p

Detailed description: Musical staff 66-70. Treble clef. The staff contains a melodic line with eighth notes. Dynamic markings include forte (f), diminuendo (dim.), and piano (p).

71

poco rall.

pp

Detailed description: Musical staff 71-75. Treble clef. The staff contains a melodic line with eighth notes. Dynamic markings include poco rallentando (poco rall.) and piano-piano (pp).

Fantasia pastoril

para 4 trompas

Trompa 4 em Fá

Fanfarras de caça

Francisco Braga
1908

Allegretto **3** **allarg.** **tempo**

7 **A** *p* **2** **allarg.** *pp*

14 **tempo** *f*

20 *p* *f*

26

32 **allarg.** **E** **tempo** **5**

39 **15** **i**

56 *f - pp*

61 1. | 2.

pp

66 allarg. O tempo **11**

pp

81 rit. Fim **U** a tempo

f

89

pp

96 rit. Da capo
ao fim

pp

Canone

Andante **12**

pp

18

pp

24

pp

Trompas

Moderato

8

14

22 **A**

29 **E**

34

40 accel.

44

49

p

pp

f

dim.

p

pp

cresc.

3

3

3

55

dim. p

60

f

66

f dim.

70

poco rall.

p pp