

Antônio dos Reis Rayol (1863-1904)

Serenata brasileira

Editoração: Guilherme Augusto de Ávila

Instituição: Arquivo Público do Estado do Maranhão

Fundo: Acervo João Mohana

Fontes: <http://apem.cultura.ma.gov.br/acervo/items/show/1282>

flauta, oboé, clarineta, fagote, violino
(*flute, oboe, clarinet, bassoon, violin*)

Partes:

[Flauta](#)

[Oboé 1 em Sib](#)

[Oboé 2 em Sib](#)

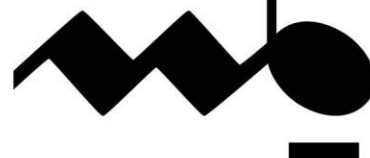
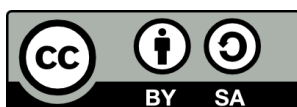
[Clarineta em Dó](#)

[Fagote 1](#)

[Fagote 2](#)

[Violino](#)

7 p.



MUSICA BRASILIS

Flauta

Serenata brasileira

Antônio dos Reis Rayol

Vivo

5 **Andante**

11 **2**

16

21

25 **Animato**

31

37 **D.C. 3x**

Clarineta em Dó

Serenata brasileira

Antônio dos Reis Rayol

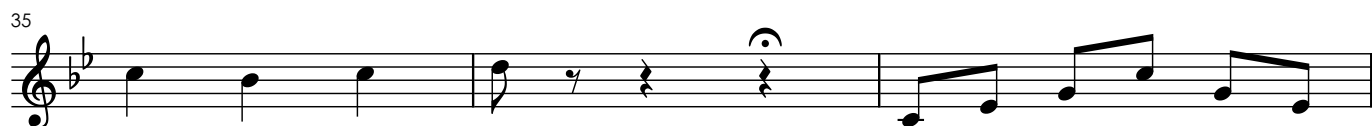
Vivo



Andante



Animato



D.C. 3x

Fagote 1

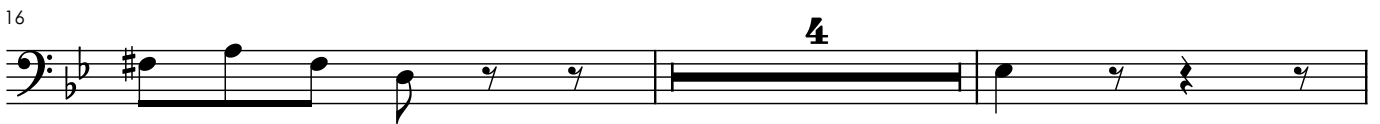
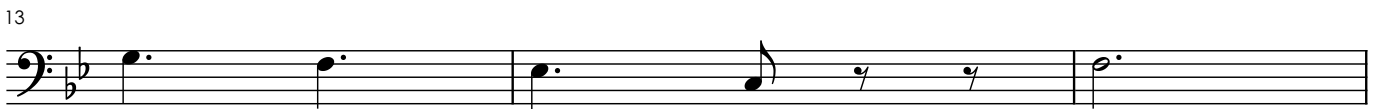
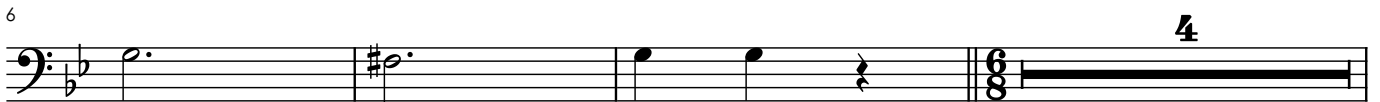
Serenata brasileira

Antônio dos Reis Rayol

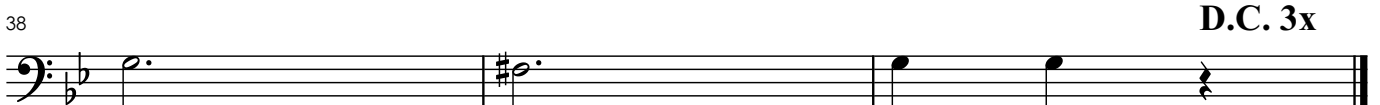
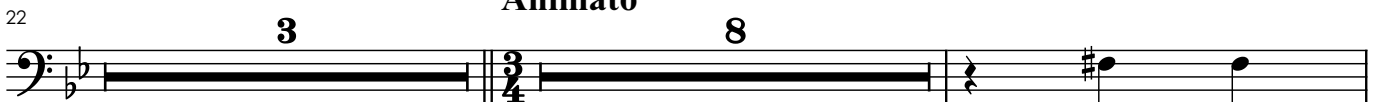
Vivo



Andante



Animato

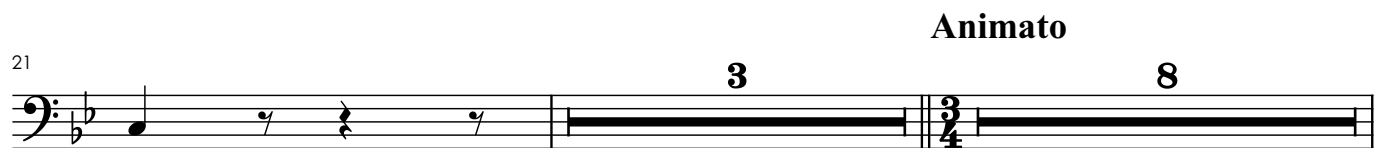


Fagote 2

Serenata brasileira

Antônio dos Reis Rayol

Vivo



D.C. 3x

Violino

Serenata brasileira

Antônio dos Reis Rayol

Vivo

Musical notation for measures 1-6, marked **Vivo**. The piece is in 3/4 time and B-flat major. The notation consists of a single staff with a treble clef, showing a sequence of chords and eighth notes.

Andante

Musical notation for measures 7-10, marked **Andante**. The tempo changes to 6/8 time. The notation shows a sequence of chords and eighth notes.

Musical notation for measures 11-14, continuing the **Andante** section. The notation shows a sequence of chords and eighth notes.

Musical notation for measures 15-18, continuing the **Andante** section. The notation shows a sequence of chords and eighth notes.

Musical notation for measures 19-22, continuing the **Andante** section. The notation shows a sequence of chords and eighth notes.

Animato

Musical notation for measures 23-27, marked **Animato**. The tempo changes to 3/4 time. The notation shows a sequence of chords and eighth notes.

Musical notation for measures 28-34, continuing the **Animato** section. The notation shows a sequence of chords and eighth notes.

D.C. 3x

Musical notation for measures 35-38, marked **D.C. 3x**. The notation shows a sequence of chords and eighth notes, ending with a double bar line.