

João Francisco da Matta (18??-1909)

Ecce sacerdos magnus (1891)

Editoração: Lívio Antônio Silva Pereira

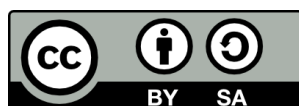
Coleção (collection): Catedral Nossa Senhora de Oliveira (Oliveira-MG)
Corporação Musical Nossa Senhora das Dores (Itapecerica –MG)

clarinete, requinta, sax horn, bombardino, trompete, oficleide, coral.
(*clarinet, saxhorn, euphonium, trumpet, ophicleide, choral*)

Partes:

Clarinete
Requinta
Sax-horn
Bombardino
Trompete
Oficleide
Coro

12 p.



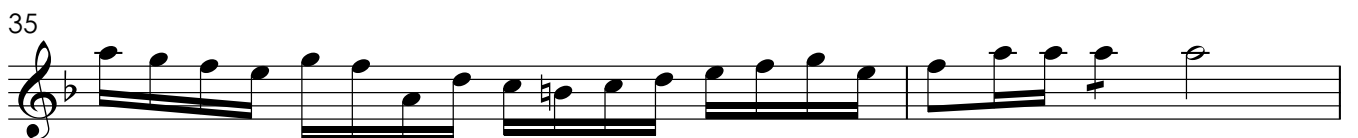
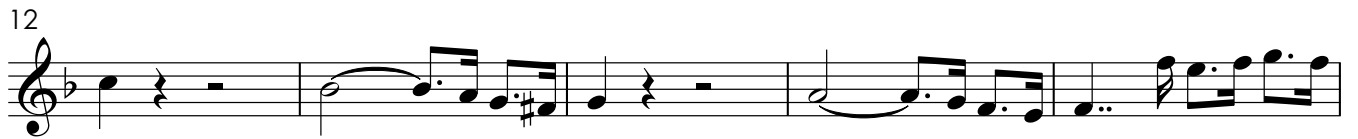
MUSICA BRASILIS

Ecce sacerdos magnus

Clarinete Sib

João Francisco da Matta
Oliveira, 8 de Abril de 1891

Andante

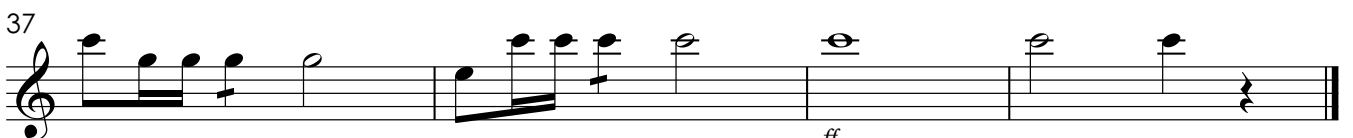
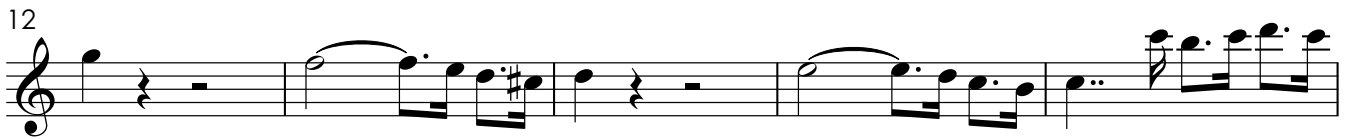


Ecce sacerdos magnus

Requinta Mi♭

João Francisco da Matta
Oliveira, 8 de Abril de 1891

Andante



ff

Ecce sacerdos magnus

Saxe-horn alto Mi♭ I e II

João Francisco da Matta
Oliveira, 8 de Abril de 1891

Andante

6

12

17

23

29

35

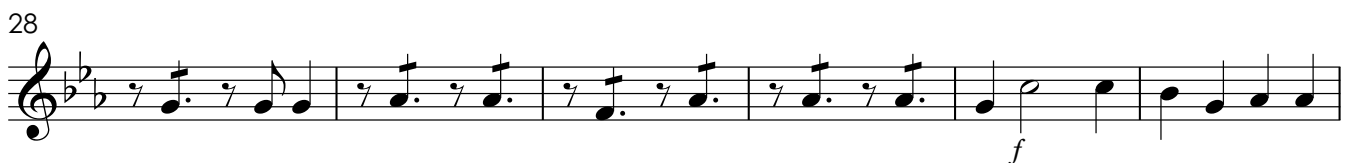
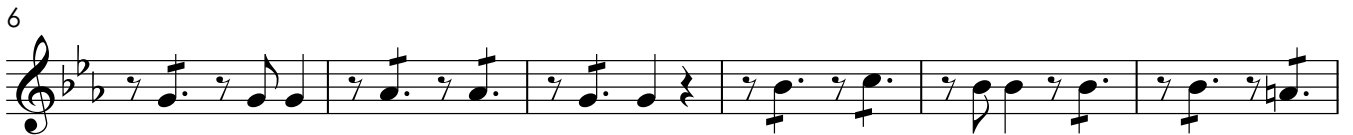
f *ff* *p* *f* *ff*

Ecce sacerdos magnus

Saxe-horn tenor Dó

João Francisco da Matta
Oliveira, 8 de Abril de 1891

Andante

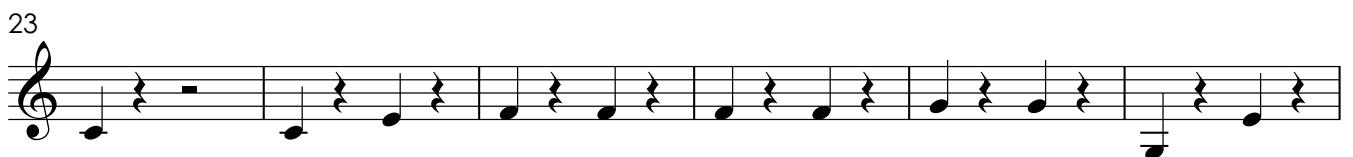


Ecce sacerdos magnus

Bombardino Mib

João Francisco da Matta
Oliveira, 8 de Abril de 1891

Andante

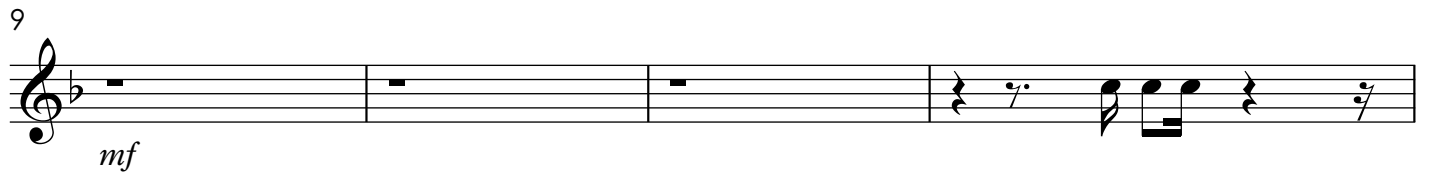


Ecce sacerdos magnus

Trompete Sib

João Francisco da Matta
Oliveira, 8 de Abril de 1891

Andante



Ecce sacerdos magnus

Oficleide

João Francisco da Matta
Oliveira, 8 de Abril de 1891

Andante



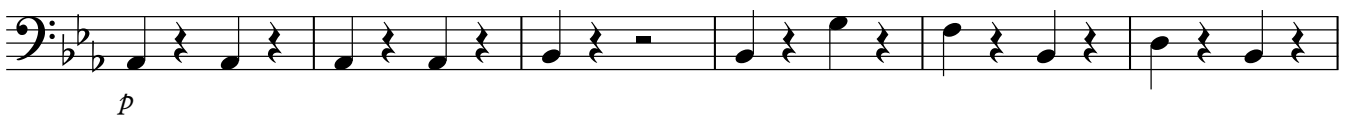
6



12



17



23



29



35



Coro

Ecce sacerdos magnus

João Francisco da Matta
Oliveira, 8 de Abril de 1891

Andante

4

Musical score for Soprano, Alto, Tenor, and Baixo parts. The score is in 4/4 time, key of B-flat major, and tempo of Andante. The lyrics are: E cce sa cer dos Mag nus. The Soprano part starts with a forte (f) dynamic. The Baixo part starts with a forte (f) dynamic.

Soprano: E cce sa cer dos Mag nus

Alto: E cce sa cer dos Mag nus

Tenor: E cce sa cer dos Mag nus

Baixo: E cce sa cer dos Mag nus

Musical score for Soprano, Alto, Tenor, and Baixo parts. The score is in 4/4 time, key of B-flat major, and tempo of Andante. The lyrics are: Qui in die bus suis Pla cuit De o. The Soprano part starts with a piano (p) dynamic. The Baixo part starts with a piano (p) dynamic.

S: Qui in di e bus su is Pla cuit De o

A: Qui in di e bus su is Pla cuit De o

T: Qui in di e bus su is Pla cuit De o

B: Qui in di e bus su is Pla cuit De o

11

S *p* Pla cuit De o *f* Et in ven tus

A Pla cuit De o Et in ven tus

T Pla cuit De o Et in ven tus

B Pla cuit De o Et in ven tus

15

S *p* est _____ jus tus et in

A est _____ jus tus et in

T est _____ jus tus et in

B est _____ jus tus et in

18

S
tem po re i ra cun di ae fac tus

A
tem po re i ra cun di ae fac tus

T
tem po re i ra cun di ae fac tus

B
tem po re i ra cun di ae fac tus

22

S
re con ti li a tio et in

A
re con ti li a tio et in

T
re con ti li a tio et in

B
re con ti li a tio et in

26

S
tem po re i ra cun di ae fac tus

A
tem po re i ra cun di ae fac tus

T
tem po re i ra cun di ae fac tus

B
tem po re i ra cun di ae fac tus

30

S
re con ti li a ti o re con ti li

A
re con ti li a ti o re con ti li

T
re con ti li a tio re con ti li

B
re con ti li a ti o re con ti li

33

S
a ti o re con ti li

A
a ti o re con ti li

T
a tio re con ti li

B
a ti o re con ti li

35

S
a ti o **4**

A
a ti o **4**

T
a tio **4**

B
a ti o **4**