

# Henrique Ciríaco Ferreira (1877-1942)

Não repare  
Polca

Editoração: Guilherme Augusto de Ávila

Instituição: Arquivo Público do Estado do Maranhão

Fundo: Acervo João Mohana

Fontes: <http://apem.cultura.ma.gov.br/acervo/items/show/448>

flauta, clarineta, saxofone, fagote, trompete, trombone, caixa clara,  
bumbo, bombardino  
(*flute, clarinet, saxophone, bassoon, trumpet, trombone, snare drum,  
bass drum, euphonium*)

Partes:

[Flauta](#)

[Clarineta em Dó](#)

[Contrabaixo](#)

[Fagote](#)

[Trompete em Sib.](#)

[Trombone 1](#)

[Trombone 2](#)

[Trombone 3](#)

[Caixa Clara](#)

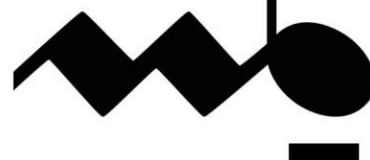
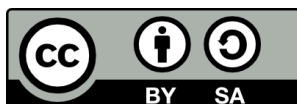
[Bumbo](#)

[Bombardino](#)

11 p.



9 790696 520517



MUSICA BRASILIS

Flauta

# Não repare

Polca

Henrique Ciríaco Ferreira

1. 2.  $\Phi$

16

21  $\Phi$

27  $\Phi$  Trio

32 D.C. at  $\Phi$

1. 2.

Clarinetta em Dó

# Não repare

Polca

Henrique Ciríaco Ferreira

1. 2.  $\oplus$

16

21  $\S$

$\oplus$  Trio

27

32 D.C. al  $\S$

1. 2.

Contrabaixo

# Não repare

Polca

Henrique Ciríaco Ferreira

7

13

19

25

30

1. 2.

1. 2.

⊕

⊕

⊕ Trio

D.C. al ⊕

Fagote

# Não repare

Polca

Henrique Ciríaco Ferreira

6

11

16

21

26

31

1.

2.

1.

2.

§

⊕

⊕

§

Trio

D.C. al §

Trompete em Si b

# Não repare

Polca

Henrique Ciríaco Ferreira

4

9

13

17

21

25

29

33

1.

2.

D.C. al  $\text{§}$

Trio

Trombone 1

# Não repare

Polca

Henrique Ciríaco Ferreira

3

Measures 1-5: Bass clef, 2/4 time, key of B-flat. Measure 1 starts with a quarter rest followed by a quarter note G2. Measure 2: quarter note G2, quarter note A2. Measure 3: quarter note Bb2, quarter note C3. Measure 4: quarter note D3, quarter note E3. Measure 5: quarter note F3, quarter note G3. A repeat sign with a double bar line and a first ending symbol (§) is above measure 1.

6

Measures 6-10: Bass clef, 2/4 time, key of B-flat. Measure 6: quarter note G3, quarter note A3. Measure 7: quarter note Bb3, quarter note C4. Measure 8: quarter note D4, quarter note E4. Measure 9: quarter note F4, quarter note G4. Measure 10: quarter note A4, quarter note Bb4. A repeat sign with a double bar line and a first ending symbol (§) is above measure 6.

11

Measures 11-15: Bass clef, 2/4 time, key of B-flat. Measure 11: quarter note G3, quarter note A3. Measure 12: quarter note Bb3, quarter note C4. Measure 13: quarter note D4, quarter note E4. Measure 14: quarter note F4, quarter note G4. Measure 15: quarter note A4, quarter note Bb4. A repeat sign with a double bar line and a first ending symbol (§) is above measure 11.

16

Measures 16-20: Bass clef, 2/4 time, key of B-flat. Measure 16: quarter note G3, quarter note A3. Measure 17: quarter note Bb3, quarter note C4. Measure 18: quarter note D4, quarter note E4. Measure 19: quarter note F4, quarter note G4. Measure 20: quarter note A4, quarter note Bb4. A repeat sign with a double bar line and a first ending symbol (§) is above measure 16. Above measure 18 is a circled cross symbol (⊕). Above measure 19 is a circled cross symbol (⊕). Above measure 20 is a circled cross symbol (⊕). First ending (1.) covers measures 16-17. Second ending (2.) covers measures 18-20.

21

Measures 21-25: Bass clef, 2/4 time, key of B-flat. Measure 21: quarter note G3, quarter note A3. Measure 22: quarter note Bb3, quarter note C4. Measure 23: quarter note D4, quarter note E4. Measure 24: quarter note F4, quarter note G4. Measure 25: quarter note A4, quarter note Bb4. A repeat sign with a double bar line and a first ending symbol (§) is above measure 21.

26

Measures 26-30: Bass clef, 2/4 time, key of B-flat. Measure 26: quarter note G3, quarter note A3. Measure 27: quarter note Bb3, quarter note C4. Measure 28: quarter note D4, quarter note E4. Measure 29: quarter note F4, quarter note G4. Measure 30: quarter note A4, quarter note Bb4. A repeat sign with a double bar line and a first ending symbol (§) is above measure 26. Above measure 27 is a circled cross symbol (⊕). Above measure 28 is a circled cross symbol (⊕). Above measure 29 is a circled cross symbol (⊕). Above measure 30 is a circled cross symbol (⊕). A circled cross symbol (⊕) is above measure 26. The word "Trio" is written above measure 27.

31

Measures 31-35: Bass clef, 2/4 time, key of B-flat. Measure 31: quarter note G3, quarter note A3. Measure 32: quarter note Bb3, quarter note C4. Measure 33: quarter note D4, quarter note E4. Measure 34: quarter note F4, quarter note G4. Measure 35: quarter note A4, quarter note Bb4. A repeat sign with a double bar line and a first ending symbol (§) is above measure 31. Above measure 34 is a circled cross symbol (⊕). Above measure 35 is a circled cross symbol (⊕). First ending (1.) covers measures 31-34. Second ending (2.) covers measures 35-35. The text "D.C. al §" is written above measure 35.

Trombone 2

# Não repare

Polca

Henrique Ciríaco Ferreira

1.  $\%$

4

8

13

1.  $\%$

17

22

$\oplus$

27 **Trio**

32

1. 2.  $\%$

D.C. al  $\%$



Trombone 3

# Não repare

Polca

Henrique Ciríaco Ferreira

1. 2. 3. 4. 5. 6. 7. 8. 9. 10. 11. 12. 13. 14. 15. 16. 17. 18. 19. 20. 21. 22. 23. 24. 25. 26. 27. 28. 29. 30. 31. 32. 33. 34. 35. 36. 37. 38. 39. 40. 41. 42. 43. 44. 45. 46. 47. 48. 49. 50. 51. 52. 53. 54. 55. 56. 57. 58. 59. 60. 61. 62. 63. 64. 65. 66. 67. 68. 69. 70. 71. 72. 73. 74. 75. 76. 77. 78. 79. 80. 81. 82. 83. 84. 85. 86. 87. 88. 89. 90. 91. 92. 93. 94. 95. 96. 97. 98. 99. 100. 101. 102. 103. 104. 105. 106. 107. 108. 109. 110. 111. 112. 113. 114. 115. 116. 117. 118. 119. 120. 121. 122. 123. 124. 125. 126. 127. 128. 129. 130. 131. 132. 133. 134. 135. 136. 137. 138. 139. 140. 141. 142. 143. 144. 145. 146. 147. 148. 149. 150. 151. 152. 153. 154. 155. 156. 157. 158. 159. 160. 161. 162. 163. 164. 165. 166. 167. 168. 169. 170. 171. 172. 173. 174. 175. 176. 177. 178. 179. 180. 181. 182. 183. 184. 185. 186. 187. 188. 189. 190. 191. 192. 193. 194. 195. 196. 197. 198. 199. 200. 201. 202. 203. 204. 205. 206. 207. 208. 209. 210. 211. 212. 213. 214. 215. 216. 217. 218. 219. 220. 221. 222. 223. 224. 225. 226. 227. 228. 229. 230. 231. 232. 233. 234. 235. 236. 237. 238. 239. 240. 241. 242. 243. 244. 245. 246. 247. 248. 249. 250. 251. 252. 253. 254. 255. 256. 257. 258. 259. 260. 261. 262. 263. 264. 265. 266. 267. 268. 269. 270. 271. 272. 273. 274. 275. 276. 277. 278. 279. 280. 281. 282. 283. 284. 285. 286. 287. 288. 289. 290. 291. 292. 293. 294. 295. 296. 297. 298. 299. 300. 301. 302. 303. 304. 305. 306. 307. 308. 309. 310. 311. 312. 313. 314. 315. 316. 317. 318. 319. 320. 321. 322. 323. 324. 325. 326. 327. 328. 329. 330. 331. 332. 333. 334. 335. 336. 337. 338. 339. 340. 341. 342. 343. 344. 345. 346. 347. 348. 349. 350. 351. 352. 353. 354. 355. 356. 357. 358. 359. 360. 361. 362. 363. 364. 365. 366. 367. 368. 369. 370. 371. 372. 373. 374. 375. 376. 377. 378. 379. 380. 381. 382. 383. 384. 385. 386. 387. 388. 389. 390. 391. 392. 393. 394. 395. 396. 397. 398. 399. 400. 401. 402. 403. 404. 405. 406. 407. 408. 409. 410. 411. 412. 413. 414. 415. 416. 417. 418. 419. 420. 421. 422. 423. 424. 425. 426. 427. 428. 429. 430. 431. 432. 433. 434. 435. 436. 437. 438. 439. 440. 441. 442. 443. 444. 445. 446. 447. 448. 449. 450. 451. 452. 453. 454. 455. 456. 457. 458. 459. 460. 461. 462. 463. 464. 465. 466. 467. 468. 469. 470. 471. 472. 473. 474. 475. 476. 477. 478. 479. 480. 481. 482. 483. 484. 485. 486. 487. 488. 489. 490. 491. 492. 493. 494. 495. 496. 497. 498. 499. 500. 501. 502. 503. 504. 505. 506. 507. 508. 509. 510. 511. 512. 513. 514. 515. 516. 517. 518. 519. 520. 521. 522. 523. 524. 525. 526. 527. 528. 529. 530. 531. 532. 533. 534. 535. 536. 537. 538. 539. 540. 541. 542. 543. 544. 545. 546. 547. 548. 549. 550. 551. 552. 553. 554. 555. 556. 557. 558. 559. 560. 561. 562. 563. 564. 565. 566. 567. 568. 569. 570. 571. 572. 573. 574. 575. 576. 577. 578. 579. 580. 581. 582. 583. 584. 585. 586. 587. 588. 589. 590. 591. 592. 593. 594. 595. 596. 597. 598. 599. 600. 601. 602. 603. 604. 605. 606. 607. 608. 609. 610. 611. 612. 613. 614. 615. 616. 617. 618. 619. 620. 621. 622. 623. 624. 625. 626. 627. 628. 629. 630. 631. 632. 633. 634. 635. 636. 637. 638. 639. 640. 641. 642. 643. 644. 645. 646. 647. 648. 649. 650. 651. 652. 653. 654. 655. 656. 657. 658. 659. 660. 661. 662. 663. 664. 665. 666. 667. 668. 669. 670. 671. 672. 673. 674. 675. 676. 677. 678. 679. 680. 681. 682. 683. 684. 685. 686. 687. 688. 689. 690. 691. 692. 693. 694. 695. 696. 697. 698. 699. 700. 701. 702. 703. 704. 705. 706. 707. 708. 709. 710. 711. 712. 713. 714. 715. 716. 717. 718. 719. 720. 721. 722. 723. 724. 725. 726. 727. 728. 729. 730. 731. 732. 733. 734. 735. 736. 737. 738. 739. 740. 741. 742. 743. 744. 745. 746. 747. 748. 749. 750. 751. 752. 753. 754. 755. 756. 757. 758. 759. 760. 761. 762. 763. 764. 765. 766. 767. 768. 769. 770. 771. 772. 773. 774. 775. 776. 777. 778. 779. 780. 781. 782. 783. 784. 785. 786. 787. 788. 789. 790. 791. 792. 793. 794. 795. 796. 797. 798. 799. 800. 801. 802. 803. 804. 805. 806. 807. 808. 809. 810. 811. 812. 813. 814. 815. 816. 817. 818. 819. 820. 821. 822. 823. 824. 825. 826. 827. 828. 829. 830. 831. 832. 833. 834. 835. 836. 837. 838. 839. 840. 841. 842. 843. 844. 845. 846. 847. 848. 849. 850. 851. 852. 853. 854. 855. 856. 857. 858. 859. 860. 861. 862. 863. 864. 865. 866. 867. 868. 869. 870. 871. 872. 873. 874. 875. 876. 877. 878. 879. 880. 881. 882. 883. 884. 885. 886. 887. 888. 889. 890. 891. 892. 893. 894. 895. 896. 897. 898. 899. 900. 901. 902. 903. 904. 905. 906. 907. 908. 909. 910. 911. 912. 913. 914. 915. 916. 917. 918. 919. 920. 921. 922. 923. 924. 925. 926. 927. 928. 929. 930. 931. 932. 933. 934. 935. 936. 937. 938. 939. 940. 941. 942. 943. 944. 945. 946. 947. 948. 949. 950. 951. 952. 953. 954. 955. 956. 957. 958. 959. 960. 961. 962. 963. 964. 965. 966. 967. 968. 969. 970. 971. 972. 973. 974. 975. 976. 977. 978. 979. 980. 981. 982. 983. 984. 985. 986. 987. 988. 989. 990. 991. 992. 993. 994. 995. 996. 997. 998. 999. 1000.

Caixa Clara

# Não repare

Polca

Henrique Ciríaco Ferreira

♩ 2/4 %

14

1. 2.

18 ⊕

21

24 % ⊕ Trio

6

D.C. al %

33 1. 2.

Bumbo

# Não repare

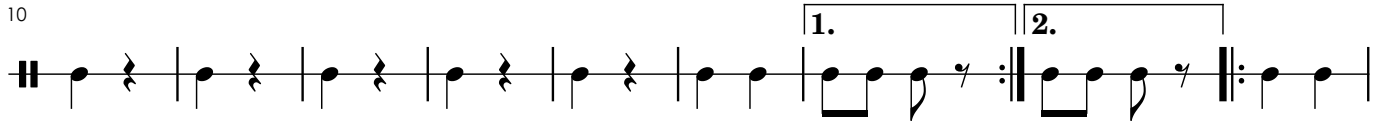
Polca

Henrique Ciríaco Ferreira

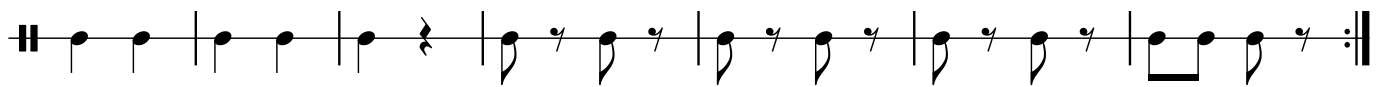
⌘



10



19



26



Bombardino

# Não repare

Polca

Henrique Ciríaco Ferreira

§

6

12

1.

⊕

17

22

⊕

Trio

27

32

1.

2.

D.C. al §