

Ágide Azzoni (1885-1939)

Olhar severo

Projeto e edição das partituras: Presto
Editor-chefe: Thiago Rocha
Editor das partituras: Éder Nunes
Assistente de edição: Victor Hugo Moretti

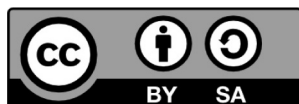
Agradecimento ao projeto Ágide Azzoni
Coordenação Geral de Lúcia Bachiega.

banda
(band)

Partes:

Requinta	Trombone 2
Clarineta 1	Gênis 1
Clarineta 2	Gênis 2
Clarineta 3	Baixo 1 em Mib
Saxofone Alto de canto	Baixo 2 em Mib
Saxofone Tenor	Baixo 3 em Mib
Pistão 1	Caixa
Pistão 2	Pratos e Bumbo
Trombone de canto	
Trombone 1	Guia para regência

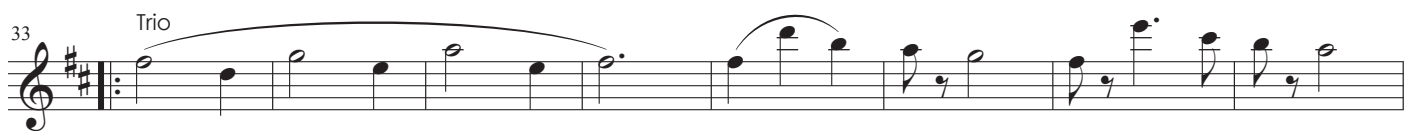
19 p.



MUSICA BRASILIS

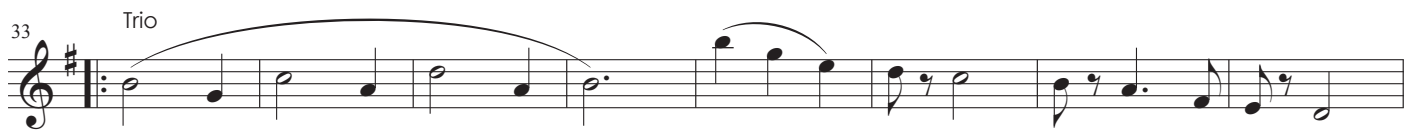
Olhar severo

Ágide Azzoni



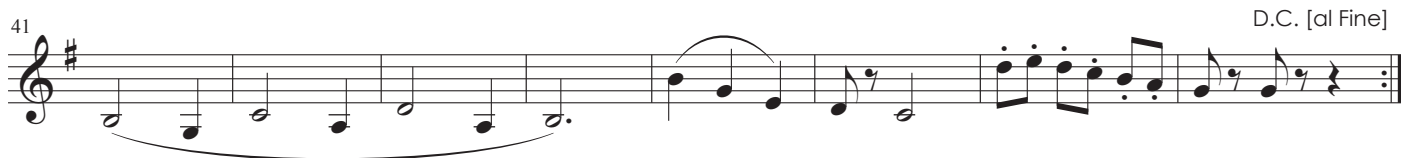
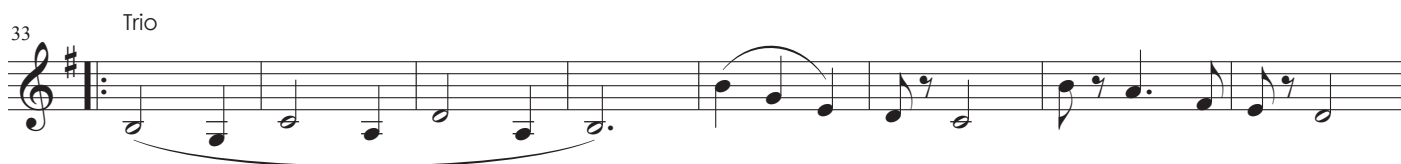
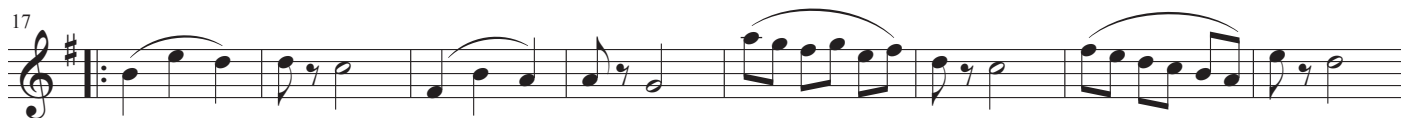
Olhar severo

Ágide Azzoni



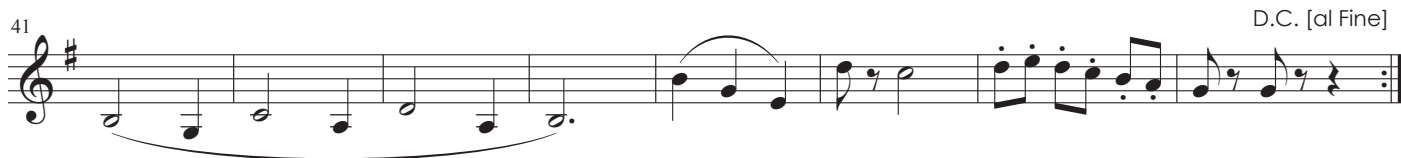
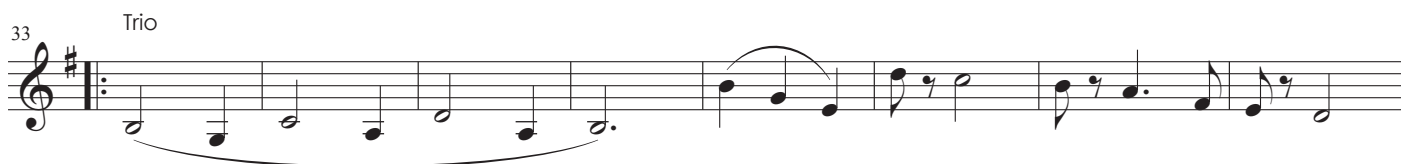
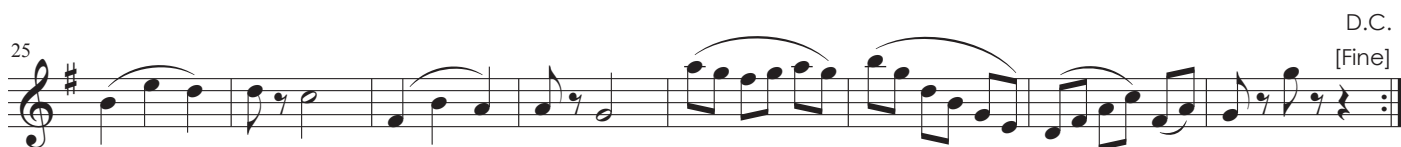
Olhar severo

Ágide Azzoni



Olhar severo

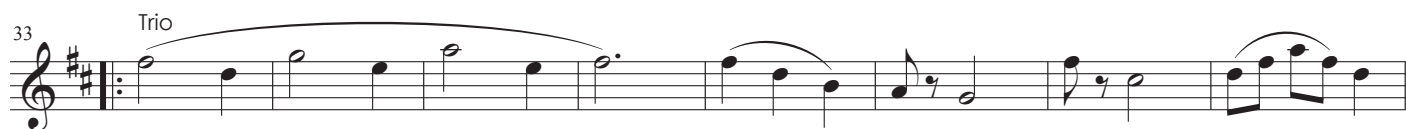
Ágide Azzoni



Saxofone Alto
de canto

Olhar severo

Ágide Azzoni



Olhar severo

Ágide Azzoni



Olhar severo

Ágide Azzoni



Olhar severo

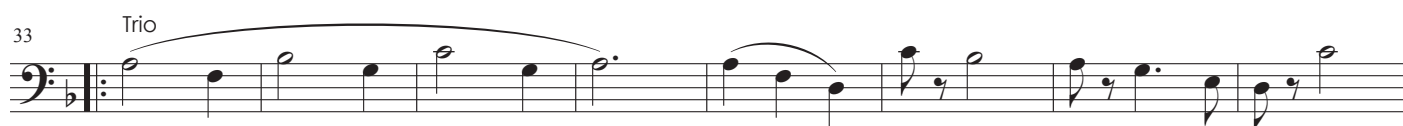
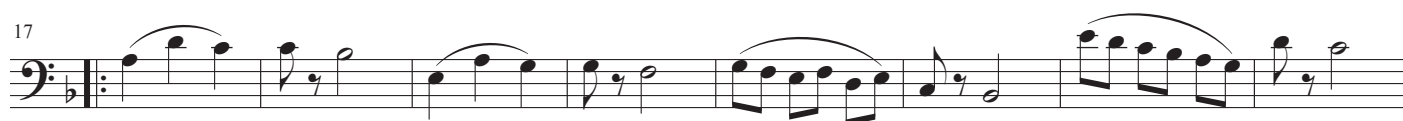
Ágide Azzoni



Olhar severo

Ágide Azzoni

[original em Si₆]



Olhar severo

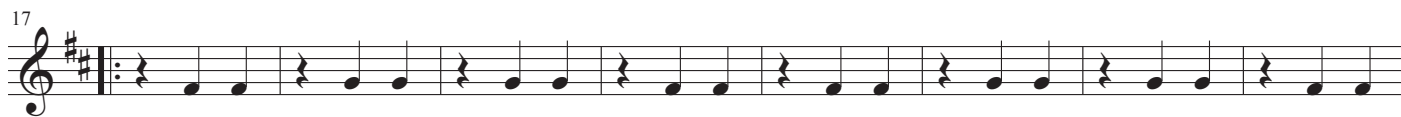
Ágide Azzoni

[original em Si \flat]



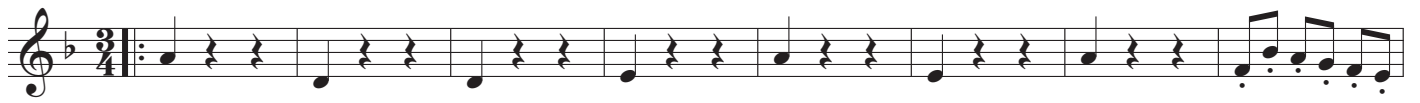
Olhar severo

Ágide Azzoni



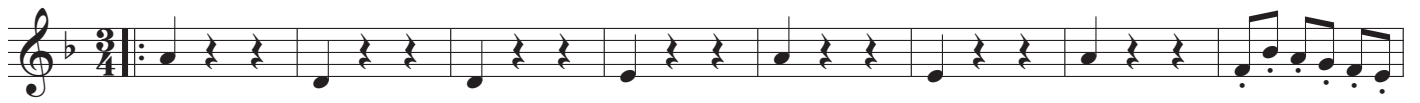
Olhar severo

Ágide Azzoni



Olhar severo

Ágide Azzoni



Olhar severo

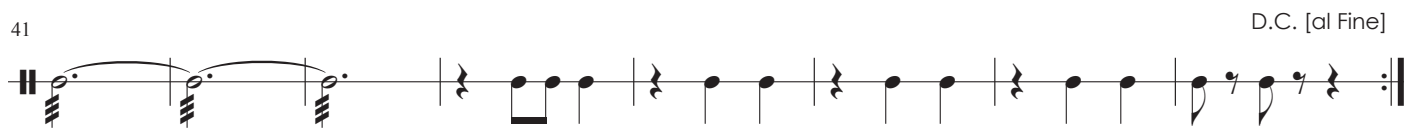
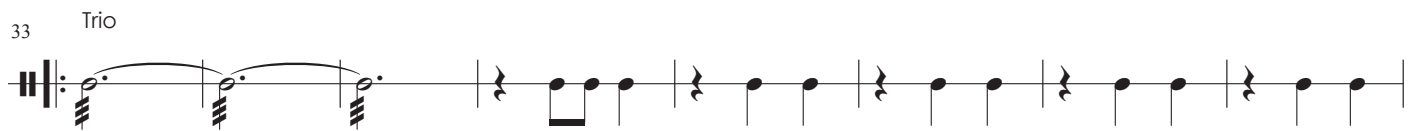
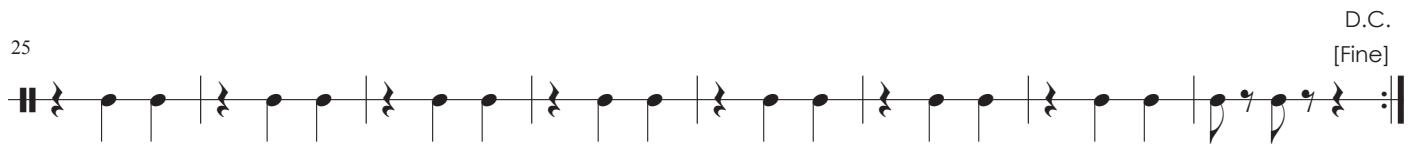
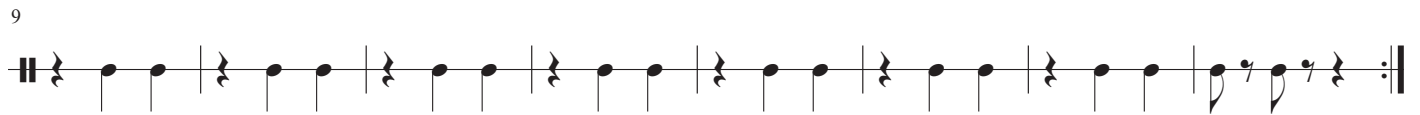
Ágide Azzoni



Caixa

Olhar severo

Ágide Azzoni



Olhar severo

Ágide Azzoni

Pratos Bumbo

3/4

4

2

^

v

9

Pt Bmb

4

17

Pt Bmb

4

25

Pt Bmb

4

D.C. [Fine]

33

Trio

Pt Bmb

4

41

Pt Bmb

4

D.C. [al Fine]

Olhar severo

Ágide Azzoni

