

José Maurício Nunes Garcia (1767-1830)

Tota Pulchra Es Maria
CPM 001

Edição: Antonio Campos

soprano, coro, orquestra
(*soprano, choir, orchestra*)

Partes:

Flauta
Soprano solo
Coro (SATB)
Violinos I
Violinos II
Violas
Violoncelos
Contrabaixos

10 p.

© Antonio Campos – licenciado para Musica Brasilis,
Rio de Janeiro, 2017



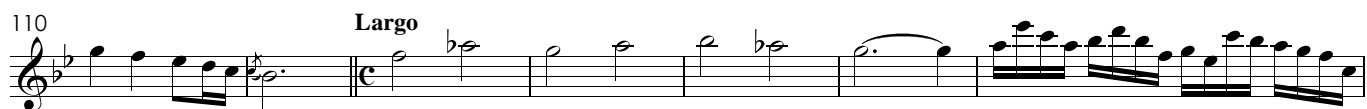
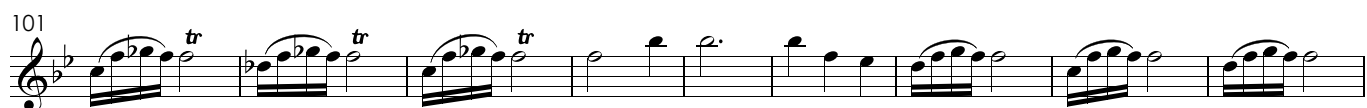
MUSICA BRASILIS

Tota Pulchra Es Maria

Flauta

José Maurício Nunes Garcia
(1783)

Andante amoroso



Tota Pulchra Es Maria

Soprano Solo

José Maurício Nunes Garcia
(1783)

Andante amoroso
10

To - ta pul - - chra es, Ma - ri - a, Ma - ri - a,

18

to - ta pul - chra, to - ta pul - chra es, Ma - ri - a, es, Ma - ri - a,

26

to - ta, pul - chra es, Ma - ri - a, to - ta pul - chra es, Ma -

31

ri - a, Ma - ri - a. **tr** **40** Tu glo - ri - a

76

Je - ru - sa - lem. **33** **Largo** **8**

Tota Pulchra Es Maria

Coro

José Maurício Nunes Garcia
(1783)

Andante amoroso

32 **5**

To - ta pul - chra es, Ma - ri - a, et

To - ta pul - chra es, Ma - ri - a, et

To - ta pul - chra es, Ma - ri - a, et

To - ta pul - chra es, Ma - ri - a, et

46

ma - cu - la o - ri - gi - na - lis non est in te, et ma - cu - la o -

ma - cu - la o - ri - gi - na - lis non est in te, et ma - cu - la o -

ma - cu - la o - ri - gi - na - lis non est in te, et ma - cu - la o -

ma - cu - la o - ri - gi - na - lis non est in te, et ma - cu - la o -

55

ri - gi - na - lis non est in te, non est in

ri - gi - na - lis non est in te, non est in

ri - gi - na - lis non est in te, non est in

ri - gi - na - lis non est in te, non est in

64

te, non est in te, non est in te Tu lae - ti - ti - a

te, non est in te, non est in te Tu lae - ti - ti - a

te, non est in te, non est in te

te, non est in te, non est in te

81

Is - ra - el, tu ho - no - ri - fi - cen - ti - a po - pu - li no - stri, tu ad - vo - ca - ta pec - ca -

Is - ra - el, tu ho - no - ri - fi - cen - ti - a po - pu - li no - stri, tu ad - vo - ca - ta pec - ca -

Tu ho - no - ri - fi - cen - ti - a po - pu - li no - stri, tu ad - vo - ca - ta pec - ca -

Tu ad - vo - ca - ta pec - ca -

90

to - rum, O Ma - ri - a, O Ma - ri - a Vir - go pru - den - tis - si ma, Vir - go

to - rum, O Ma - ri - a, O Ma - ri - a Vir - go pru - den - tis - si ma, Vir - go

to - rum, O Ma - ri - a, O Ma - ri - a Vir - go pru - den - tis - si ma, Vir - go

to - rum, O Ma - ri - a, O Ma - ri - a Vir - go pru - den - tis - si ma, Vir - go

100

cle - men - tis - si - ma, cle - men - tis - si - ma o - ra pro no - bis,

cle - men - tis - si - ma, cle - men - tis - si - ma o - ra pro no - bis,

cle - men - tis - si - ma, cle - men - tis - si - ma o - ra pro no - bis,

cle - men - tis - si - ma, cle - men - tis - si - ma o - ra pro no - bis,

112 **Largo**

in - ter - ce - de pro no - bis ad Do - mi - num Je - sum Chris - tum, - Je - sum Chris - tum.

in - ter - ce - de pro no - bis ad Do - mi - num Je - sum Chris - tum, - Je - sum Chris - tum.

in - ter - ce - de pro no - bis ad Do - mi - num Je - sum Chris - tum, - Je - sum Chris - tum.

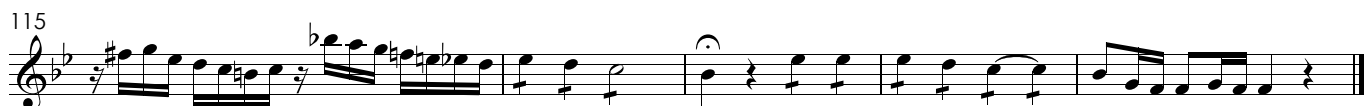
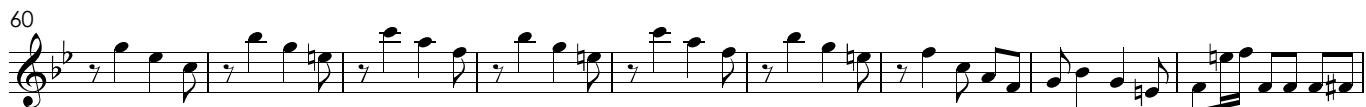
in - ter - ce - de pro no - bis ad Do - mi - num Je - sum Chris - tum, - Je - sum Chris - tum.

Tota Pulchra Es Maria

Violino I

José Maurício Nunes Garcia
(1783)

Andante amoroso



Tota Pulchra Es Maria

Violino II

José Maurício Nunes Garcia
(1783)

Andante amoroso



Largo

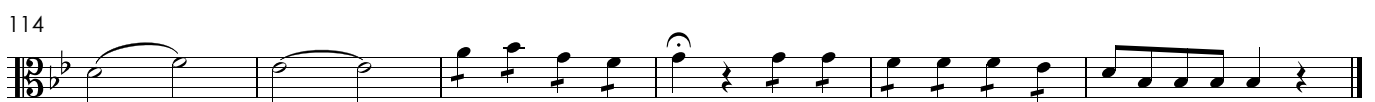
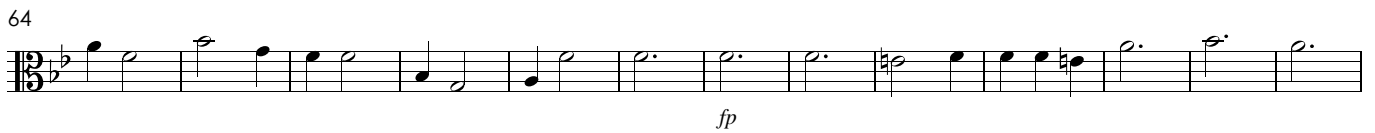
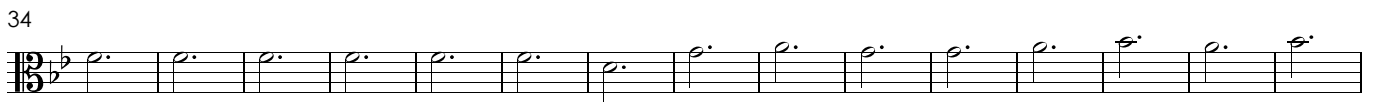


Tota Pulchra Es Maria

Viola

José Maurício Nunes Garcia
(1783)

Andante amoroso

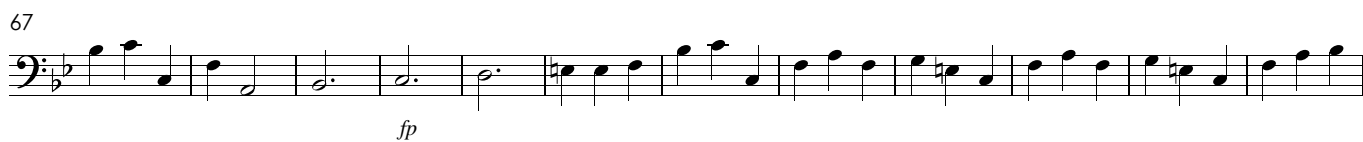
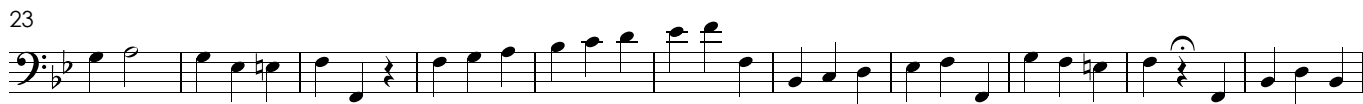


Tota Pulchra Es Maria

Violoncelo

José Maurício Nunes Garcia
(1783)

Andante amoroso



112 **Largo**



Tota Pulchra Es Maria

Contrabaixo

José Maurício Nunes Garcia
(1783)

Andante amoroso



12



23



34



45



56



67



79



91



102



112 **Largo**

